



HID-High Power ballasts for SON/MH lamps

BSN 1000L 302I

Impregnated (HID standard) electromagnetic ballasts, of copper/iron construction, for use in combination with an external ignitor, for HID lamps

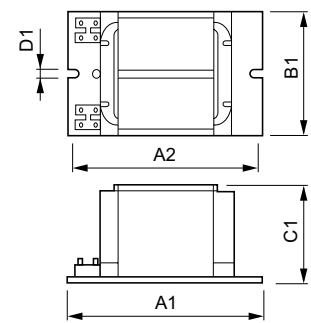
Product data

General Information	
Application Code	L302 I
Operating and Electrical	
Input Voltage	230 V
Input Frequency	50 Hz
Power Factor 100% Load (Min)	0.85
Mains Voltage Performance (AC)	-8%~+6%
Mains Voltage Safety (AC)	-10%~+10%
Input Current with PF Correction	5.4 A
Input Current without PF Correction	10.3 A
Power Factor without PF Compensation (Nom)	45
Power Losses (Nom)	52 W
Wiring	
Connector Type	Screw
System characteristics	
Rated Ballast-Lamp Power	1000 W

Temperature	
T-Winding (Max)	130 °C
Delta-T Normal Conditions	80 °C
Approval and Application	
Approval Marks	CE marking CCC certificate
Product Data	
Full product code	871016305796530
Order product name	BSN 1000L 302I
EAN/UPC - Product	8710163149189
Order code	913710106750
Numerator - Quantity Per Pack	1
Numerator - Packs per outer box	1
Material Nr. (12NC)	913710106750
Net Weight (Piece)	8.700 kg

HID-High Power ballasts for SON/MH lamps

Dimensional drawing



BSN 1000 L302 I

Product	D1	C1	A1	A2	B1
BSN 1000L 302I	7 mm	102.0 mm	183 mm	134.5 mm	117.0 mm

